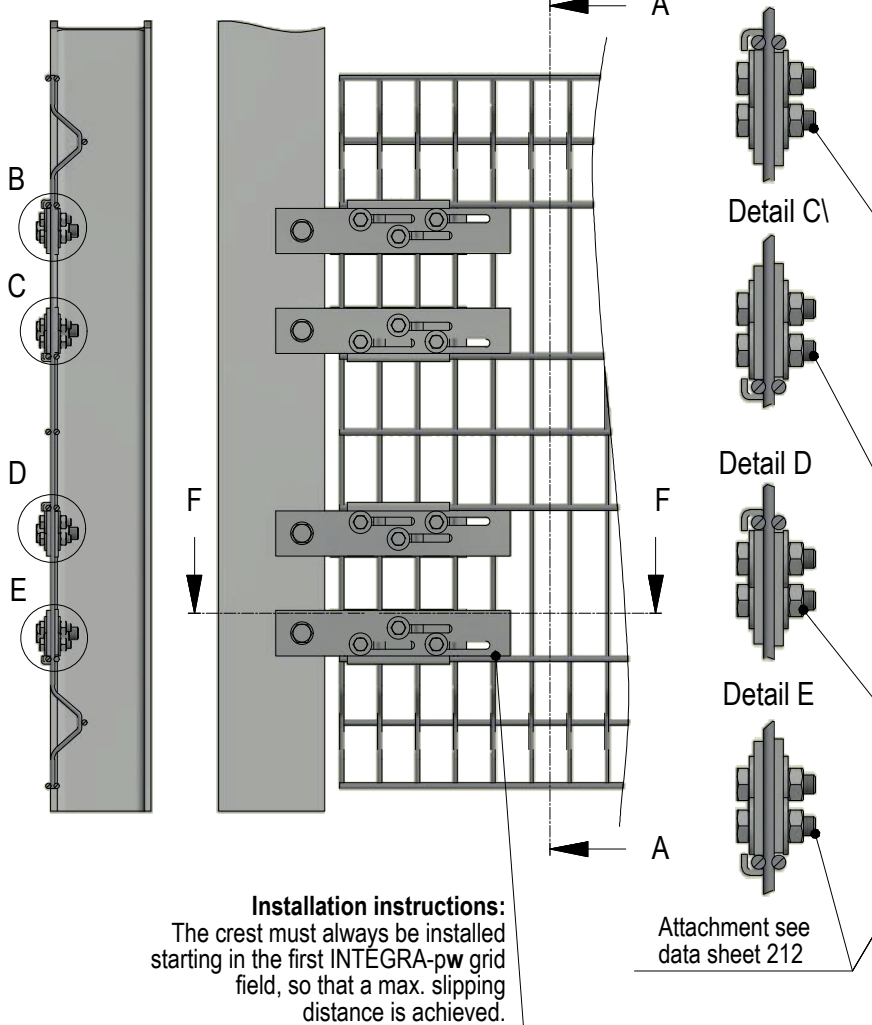


Section A-A



**Note:**

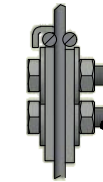
For connections in the ramp slope, an extended ramp flange is used.

**Technical data:**

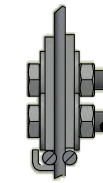
- INTEGRA-pw Fastening flange
- INTEGRA-pw crest
- INTEGRA-pw Counter flange

All bolts must be tightened with a torque of 50 Nm.

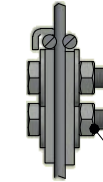
Detail B



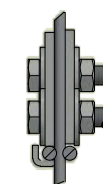
Detail C



Detail D



Detail E



Section F-F

